

# PREXISO® PLT40LI

## RECHARGEABLE LASER & TAPE MEASURE

2-IN-1

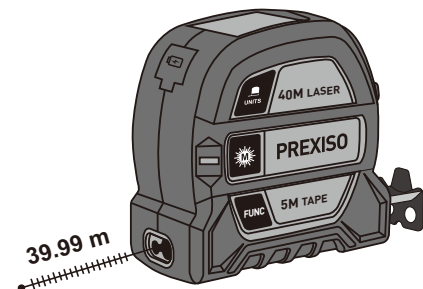


135FT / 40M LASER  
16FT / 5M TAPE

2 YEARS LIMITED WARRANTY



www.prexiso-eu.com



39.99 m

### Table of Contents

- Safety Instructions ..... 1
- Instrument Set-up ..... 2
- Overview ..... 2
- Display ..... 2
- Battery Charging ..... 2
- Operations ..... 3
- Switching ON/OFF ..... 3
- Measuring single distance ..... 3
- Continuous measuring ..... 3
- Unit setting ..... 4
- Measurement reference changing ..... 4
- Area ..... 4
- Volume ..... 4
- Pythagoras (2-point) ..... 5
- Pythagoras (3-point) ..... 5

- Technical Data ..... 6
- Troubleshooting ..... 6
- Care ..... 6
- Disposal ..... 6
- Warranty ..... 6
- Safety Instructions ..... 7
- Symbols used ..... 7
- Permitted use ..... 7
- Prohibited use ..... 7
- Hazards in use ..... 7
- Limits of use ..... 7
- Areas of responsibility ..... 8
- Electromagnetic Compatibility (EMC) ..... 8
- FCC statement (applicable in U.S.) ..... 8
- Laser classification ..... 8

### Safety Instructions

Retract Tape Measures Slowly  
Guide the tape back to retract it slowly in a controlled manner when you finish measuring. The quick return of the tape might damage the blade and blade control mechanism. To minimize injury, slowly retract metal blade tape, keeping fingers away from edges.

Do not use the product before you have studied the User Manual enclosed or on our Homepage.

If you have no such manual, or it is in the wrong language, please ask your agency for an appropriate copy. The product is permitted to use for skilled persons only.

**CAUTION:**  
Use of controls or adjustment or performance of procedures other than those specified herein may result in hazardous radiation exposure

**WARNING:**

It is a Class 2 laser product in accordance with IEC 60825-1:2014

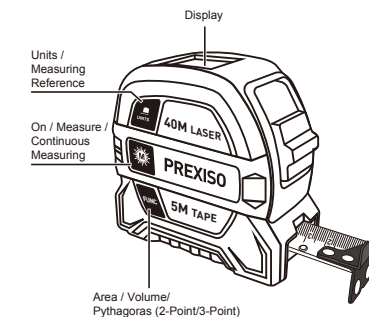


Prexiso PLT40LI

EN

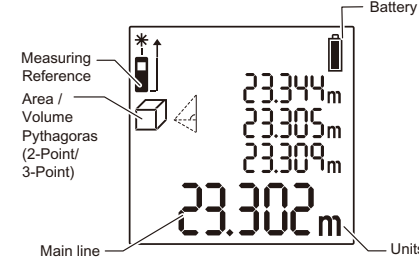
### Instrument Set-up

The safety instructions and the user manual should be read through carefully before the product is used for the first time. The person responsible for the product must ensure that all users understand these directions and adhere to them.

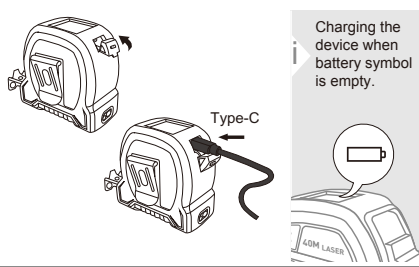


Prexiso PLT40LI

### Display



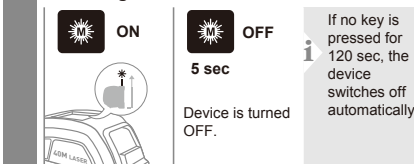
### Battery Charging



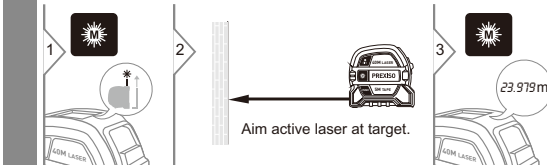
Prexiso PLT40LI

### Operations

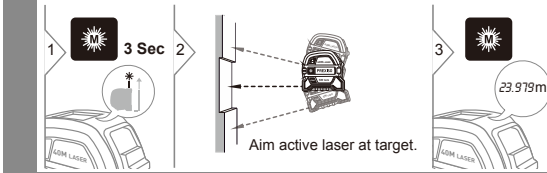
#### Switching ON/OFF



#### Measuring single distance

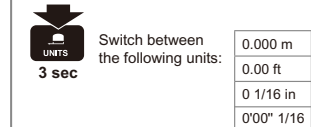


#### Continuous Measuring

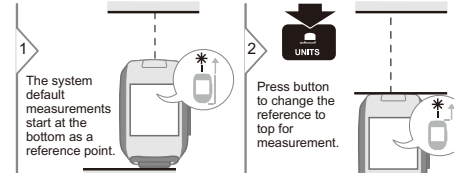


Prexiso PLT40LI

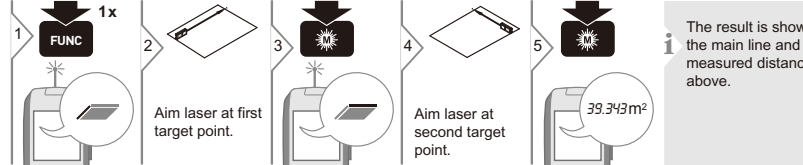
### Unit setting



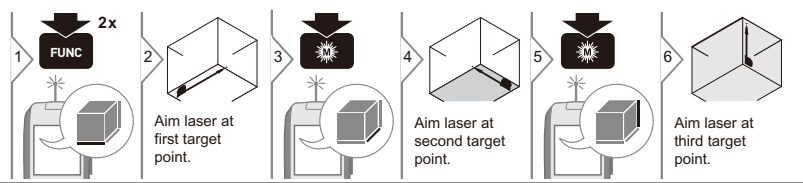
### Measurement reference changing



#### Area

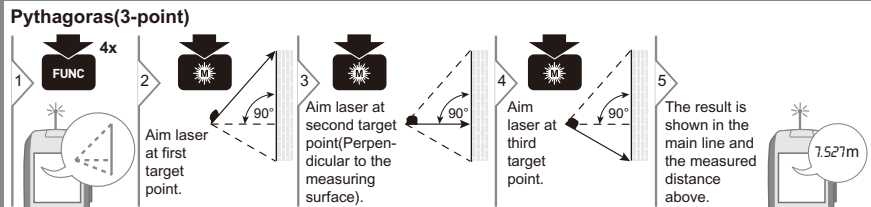
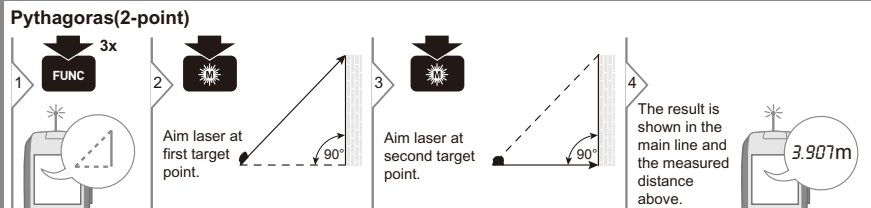
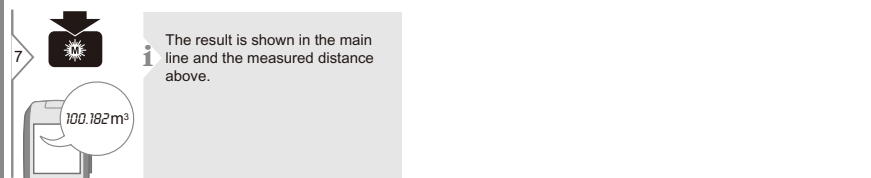


#### Volume



Prexiso PLT40LI

EN



Prexiso PLT40LI

5

### Technical Data

General	
Range with favourable conditions *	1.15-135ft 0.35-40m
Accuracy with favourable conditions *	±1/8in ±3mm
Smallest unit displayed	1/16in 1 mm
Laser class	2
Laser type	620-690 nm, < 1 mW
Power OFF automatically	after 120 s
Continuous measuring	yes
Dimension (H x D x W)	3.35 x 3.35 x 1.7 in 85 x 85 x 43 mm
Battery durability	up to 5000 measurements
Weight (with batteries)	13.4 oz 380 g
Temperature range:	
- Storage	14 to 140 °F -10 to 60 °C
- Operation	32 to 104 °F 0 to 40 °C

\* The typical measurement uncertainty of ±3 mm is valid for measurements on white, diffusive, reflective targets up to 10m at low ambient light and moderate temperatures. For distances greater than 10 m, the measurement uncertainty could increase additionally by 0.1 mm/m. In unfavourable conditions (such as bright sunlight, targets with poor reflectivity, or high or low temperatures) the measurement uncertainty could further increase up to ±6mm for distances below 10 m.

6

### Troubleshooting

ISSUE	CAUSE	ACTION
Failure to switch on	Hardware protection after switching	Restart the device
	Low battery	Recharge the device
	Insufficient On/Measure/Units button press	Press the On/Measure/Units button firmly
IC000 IC255	Beam is moved too fast	Move the measuring tool slowly
	The object is out of rated range	Measure within rated range
	Received signal too weak	Change target surface (e.g. white paper)
	Measuring time too long	Change target surface (e.g. white paper)
IC301	Received signal too strong (target is too reflective)	Shadow target area
	Ambient light is too strong	Shadow target area
IC401	Running program is not in a proper way	Restart in a proper way by the instructions of manual
	Hardware problem	Restart the device if not work, contact a local dealer

**Care**

- Clean the device with a damp, soft cloth.
- Never immerse the device in water.
- Never use aggressive cleaning agents or solvents.

### Disposal

**CAUTION**  
Flat batteries must not be disposed of with household waste. Care for the environment and take them to the collection points provided in accordance with national or local regulations. The product must not be disposed with household waste.

Prexiso PLT40LI

Dispose of the product appropriately in accordance with the national regulations in force in your country. Adhere to the national and country specific regulations.

### Warranty

Two-Year Limited Warranty. This product is warranted to the original purchaser from the original purchase date for two years subject to the warranty coverage described herein. Please retain your receipt. This product is warranted to the original user to be free from defects in material and workmanship. If you believe that the product is defective at any time during the specified warranty period, please contact Prexiso customer service agent by sending email to info@prexiso-eu.com. This warranty does not cover: (1) Part failure due to normal wear or product abuse; (2) Any parts have been altered or modified by anyone other than an authorized Prexiso personnel or failure to install and operate equipment according to the guidelines put forth in the instruction manual. (3) Any products or parts used for rental purposes, damage resulting from shipping (claims must be filed with freighter), accident, abuse, act of God, misuse, or neglect. Prexiso will replace or repair the defective unit, at its option, subject to verification of the defect.

EN

Any implied warranties arising from the sale of a Prexiso product, including but not limited to implied warranties of merchantability and fitness for a particular purpose, are limited to the above. Prexiso shall not be liable for loss of use of the product or other incidental or consequential damages, expenses, or economic loss, or for any claim of such damage, expenses, or economic loss. This warranty excludes any accessories. This warranty gives you specific legal rights, and you may also have other rights that vary from state.

### Safety Instructions

The person responsible for the instrument must ensure that all users understand these directions and adhere to them.

### Symbols used

The symbols used have the following meanings:

**WARNING**  
Indicates a potentially hazardous situation or an unintended use which, if not avoided, will result in death or serious injury.

**CAUTION**  
Indicates a potentially hazardous situation or an unintended use which, if not avoided, may result in minor injury and/or appreciable material, financial and environmental damage.

7

Prexiso PLT40LI

### Hazards in use

**WARNING**  
Watch out for erroneous measurements if the instrument is defective or if it has been dropped or has been misused or modified. Carry out periodic test measurements. Particularly after the instrument has been subject to abnormal use, and before, during and after important measurements.

**CAUTION**  
Never attempt to repair the product your-self. In case of damage, contact a local dealer.

**WARNING**  
Changes or modifications not expressly approved could void the user's authority to operate the equipment.

**CAUTION**  
Never attempt to repair the product your-self. In case of damage, contact a local dealer.

**WARNING**  
Changes or modifications not expressly approved could void the user's authority to operate the equipment.

**Limits of use**  
Refer to section "Technical data". The device is designed for use in areas entirely habitable by humans. Do not use the product in explosion hazardous areas or in aggressive environments.

**CAUTION**  
Indicates a potentially hazardous situation or an unintended use which, if not avoided, may result in minor injury and/or appreciable material, financial and environmental damage.

EN

### Safety Instructions

#### Areas of responsibility

**Responsibilities of the person in charge of the instrument:**

- To understand the safety instructions on the product and the instructions in the User Manual.
- To be familiar with local safety regulations relating to accident prevention.
- Always prevent access to the product by unauthorised personnel.

#### Electromagnetic Compatibility (EMC)

**WARNING**  
The device conforms to the most stringent requirements of the relevant standards and regulations. However, the possibility of causing interference in other devices cannot be totally excluded.

**WARNING**  
The device conforms to the most stringent requirements of the relevant standards and regulations. However, the possibility of causing interference in other devices cannot be totally excluded.

**WARNING**  
The device conforms to the most stringent requirements of the relevant standards and regulations. However, the possibility of causing interference in other devices cannot be totally excluded.

#### FCC statement (applicable in U.S.)

This equipment has been tested and found to comply with the limits for a Class B digital device, pursuant to part 15 of the FCC Rules. These limits are designed to provide reasonable protection against harmful interference in a residential installation. This equipment generates, uses and can radiate radio frequency energy and, if not installed and used in accordance with the instructions, may cause harmful interference to radio communications. However, there is no guarantee that interference will not occur in a particular installation. If this equipment does cause harmful interference to radio or television reception, which can be determined by turning the equipment off and on, the user is encouraged to try to correct the interference by one or more of the following measures:

- Reorient or relocate the receiving antenna.
- Increase the separation between the equipment and receiver.
- Connect the equipment into an outlet on a circuit different from that to which the receiver is connected.
- Consult the dealer or an experienced radio/TV technician for help.

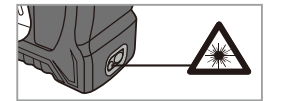
Prexiso PLT40LI

8

#### Laser classification

The device produces visible laser beams, which are emitted from the instrument: It is a Class 2 laser product in accordance with:

IEC60825-1 : 2014 "Radiation safety of laser products"



**Laser Class 2 products:**  
Do not stare into the laser beam or direct it towards other people unnecessarily. Eye protection is normally afforded by aversion responses including the blink reflex.

**WARNING**  
Looking directly into the beam with optical aids (e.g. binoculars, telescopes) can be hazardous.

**CAUTION**  
Looking into the laser beam may be hazardous to the eyes.  
Wavelength: 620 - 690 nm  
Pulse duration: > 600ps  
Maximum radiant output power for classification: < 1 mW  
Pulse repetition frequency: 320 MHz  
Beam divergence: 0.16mrad x 0.6mrad

9